



Call for Expressions of Interest

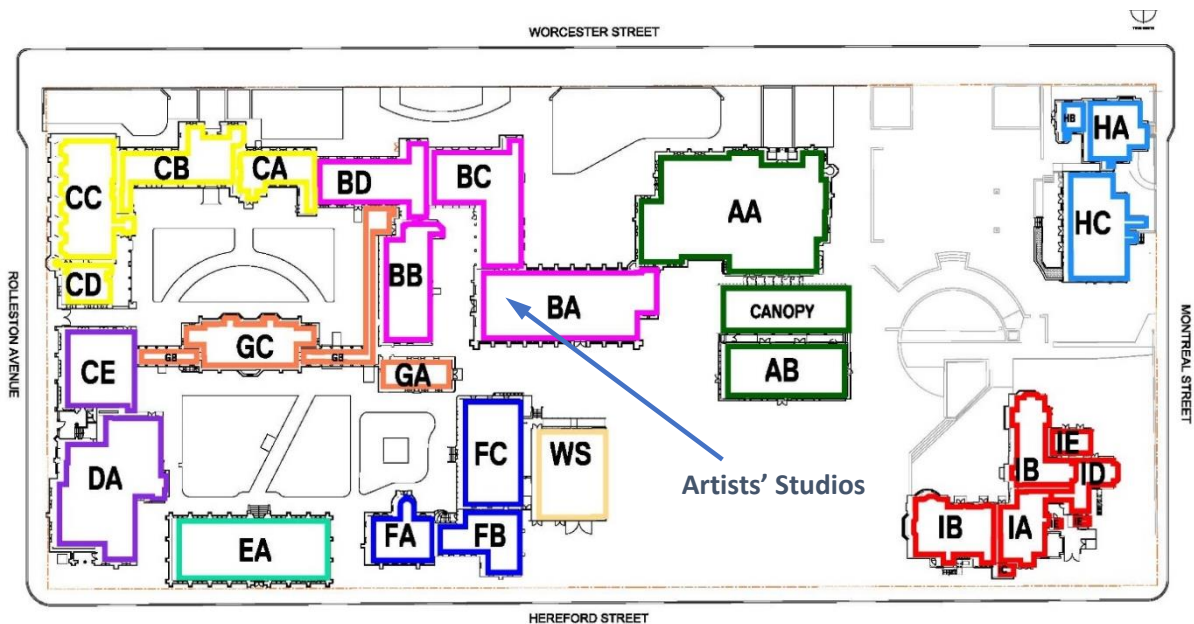
Artist Studios

Expressions of interest are sought by Te Matatiki Toi Ora The Arts Centre, from artists and craftspeople interested in leasing space in our brand new suite of studios. The studios are due to be completed early in 2025 and are located on the ground floor of the Engineering Building, next to The Arts Centre Shop.

About Us

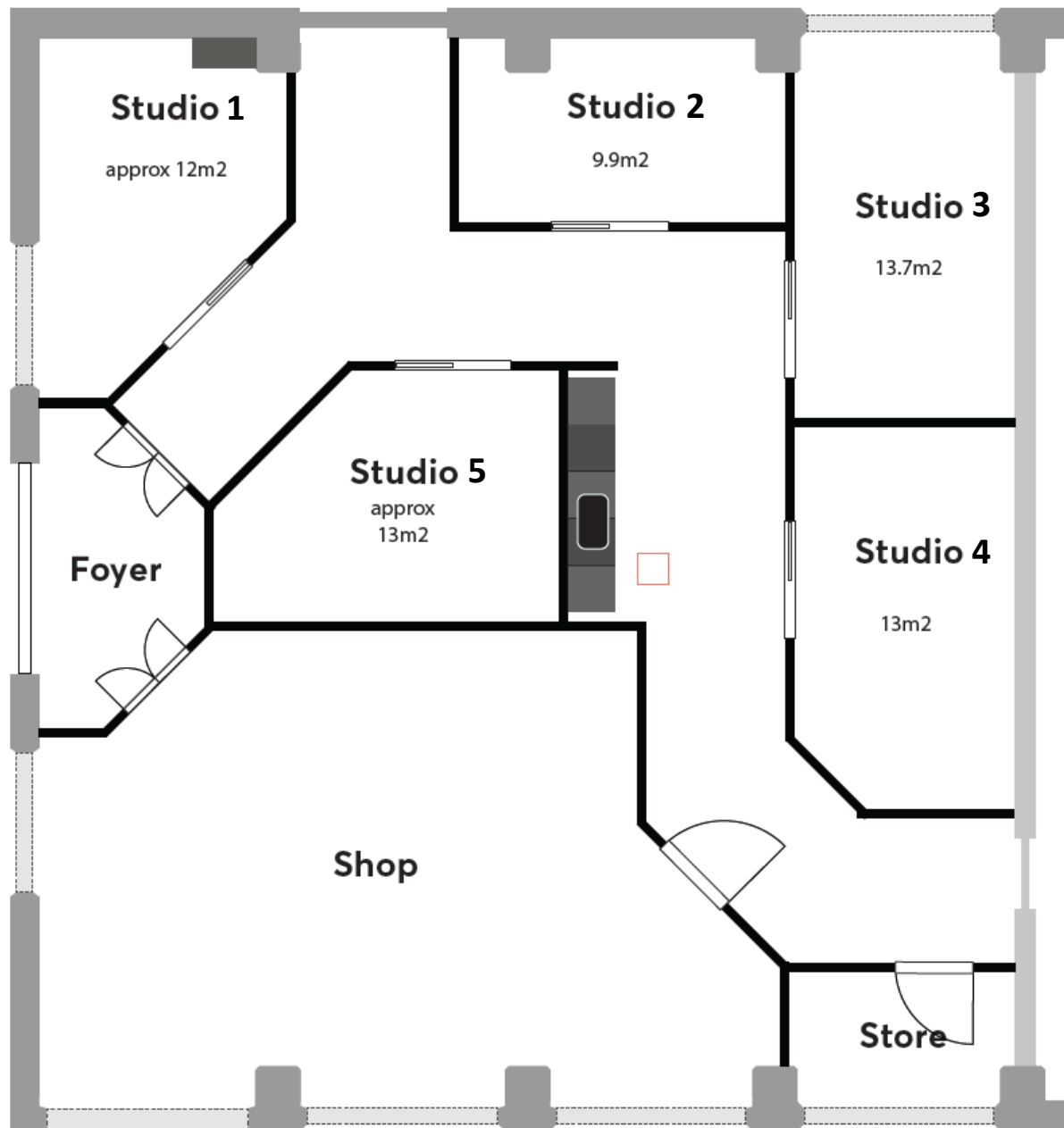
Te Matatiki Toi Ora The Arts Centre is a charitable trust established by Act of Parliament to manage and maintain 23 heritage buildings and their grounds, and to use those heritage buildings to foster, promote and facilitate interest and involvement in the arts, culture, creativity and education. It is home to more than 70 artistic and creative organisations including independent retailers, food and hospitality outlets, an award-winning cinema, a five-star hotel, four art galleries, a museum, two exhibitions, and much more.

The Arts Centre has been largely restored over the 13 years since the 2010-11 Canterbury earthquakes caused extensive damage. The artist studios now offered are the latest spaces to have had their restoration completed.



Tenancies

Studio	Floor Space	Rent/annum	OPEX/annum	Total/annum
Studio 1	12.0 sqm	\$3,600	\$2,160	\$5,760
Studio 2	9.9 sqm	\$2,920	\$1,782	\$4,702
Studio 3	13.7 sqm	\$4,110	\$2,466	\$6,576
Studio 4	13.0 sqm	\$3,900	\$2,340	\$6,240
Studio 5	13.0 sqm	\$3,900	\$2,340	\$6,240



Studios are available on a rolling basis, with exit terms of one to three months to be negotiated with individual artists. Rent will be subject to an annual market review. Figures given for Operating Expenses (OPEX) are indicative only; OPEX is charged on an actual-costs basis and includes heating, electricity, security, maintenance, etc.

Studios are provided in a 'warm shell' condition, i.e. amenities for heating, electricity, lighting and security are provided, but furniture and equipment is the tenant's responsibility. Rent includes access to a communal storage area, kitchenette and paint-disposal sink.

Public Access

The new studios will provide workspace for artists, and public activation of The Arts Centre. Each studio will be fitted with a glass sliding door through which members of the public will be able to observe artists

at work. Artists wishing to submit an expression of interest must be comfortable with this and recognise the opportunity that it presents to reach new audiences and patrons

The studios will be open to the public between 10am and 4pm, seven days per week. Preference will be given to those that can be open for the most hours. Expressions of interests from two or more parties looking to share a space will be considered in order to achieve this.

Arts Practice

Artists wishing to submit an expression of interest must be able to demonstrate that their arts practice will suit the environment and will be engaging for the public. Work must also be of a scale suited to the size of the respective studios. Examples of arts practices that will be considered include, but are not limited to:

- Painting
- Drawing
- Small scale sculpture or maquettes
- Ceramics (note that firing of ceramics must be completed offsite)
- Jewellery
- Fashion design

Arts Centre Shop

Opportunities may be available for tenant artists to sell their work through the neighbouring Arts Centre Shop. Conditions to be negotiated separately.

Submissions

Expressions of interest must include:

- Name and contact details of the artist(s).
- A statement outlining how the artist(s) will achieve the above requirements (limit of one A4 page).
- Photographic examples of the artist's works.
- A list of exhibitions or publications in which the artist's work has appeared, and any commissions for public works that the artist(s) have achieved.
- Contact details for one (ideally two) referees who can confirm the artist's suitability as a tenant.
- An indication of which studio (or studios) the artist(s) wish to rent.

Expressions of interest should be sent to:

Daniel Stirland
Operations Manager *Kaiwhakahaere Rauemi*
The Arts Centre of Christchurch

daniels@artscentre.org.nz